



INSTALLATION GUIDE

FELTON COLLECTION WET BRACKET

FELTON

SYSTEM REQUIREMENTS

To ensure the optimum performance and customer satisfaction please adhere to the following:

- Flush out all pipe work prior to installation.
- Installation should comply with relevant local authority requirements.

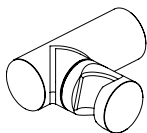
Operating Pressures

MAXIMUM	1500kPa
MINIMUM	N/A



Failure to comply with the above will void warranties

WHAT'S IN THE PACK



1 x Wet Bracket



1 x Flange

For technical assistance please ring
NZ 0800 743 358 or (09) 528 0810 | AUS 1800 798 760